

## Marches Academy Trust Remote App Configuration

The remote desktop system will provide you with access to all files that you have saved on the network at The Marches. You will also be able to edit and read the files using Microsoft Office software, even if you haven't got the software installed on your device.

This means you can now edit any Microsoft Office files on Android and Apple operating systems too. To make use of this on an Apple or Android device you will need to install the Microsoft Remote Desktop (RD Client) app (instructions below).

If you are using a Windows device then you can simply use the link from the marches.co.uk website:-



Or add a RemoteApp connection through your settings as shown below.

When you add your credentials (username and password) you need to remember to add marchesschool\ in front of your username, so for example:-

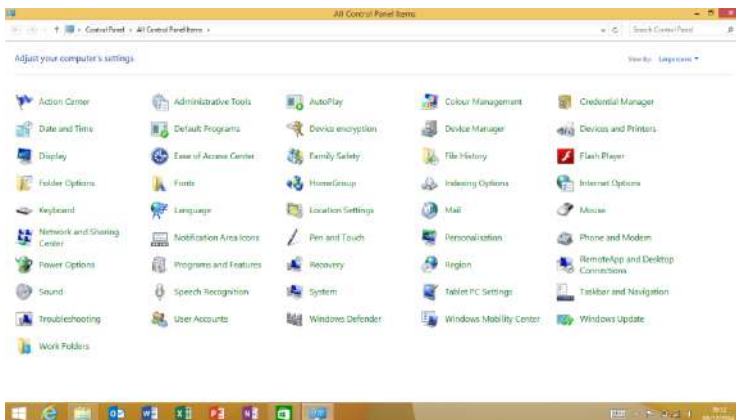
marchesschool\surname121

Your ICT teacher will be demonstrating the system this week during your lessons. Should you have any problems please email Mrs Geddes:- [Geddes.s@marchesschool.net](mailto:Geddes.s@marchesschool.net)

## Instructions

### Windows 8.1

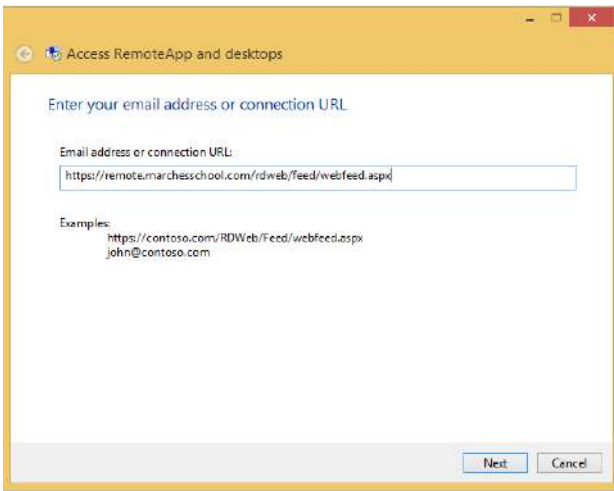
#### Open Control Panel



#### Select RemoteApp and Desktop Connections

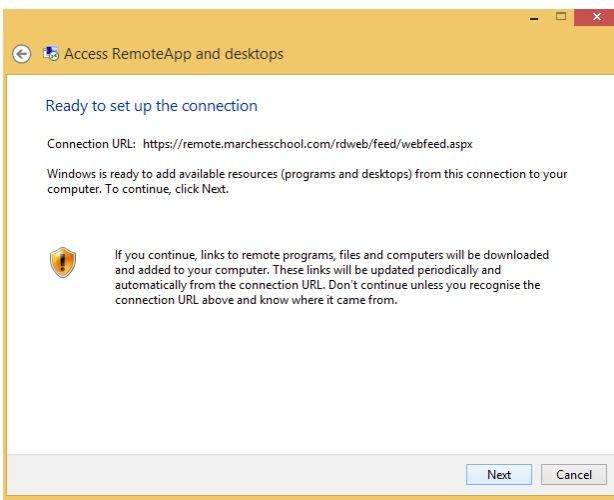


#### Select Access RemoteApp and desktops

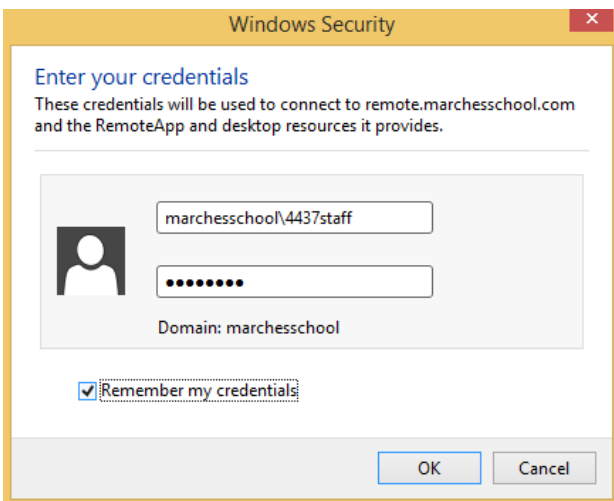


Enter <https://remote.marchesschool.com/rdweb/feed/webfeed.aspx>

Click Next



Click Next



Enter your credentials (ensure you prefix your username with marchesschool\). Select the Remember my credentials check box and click OK.

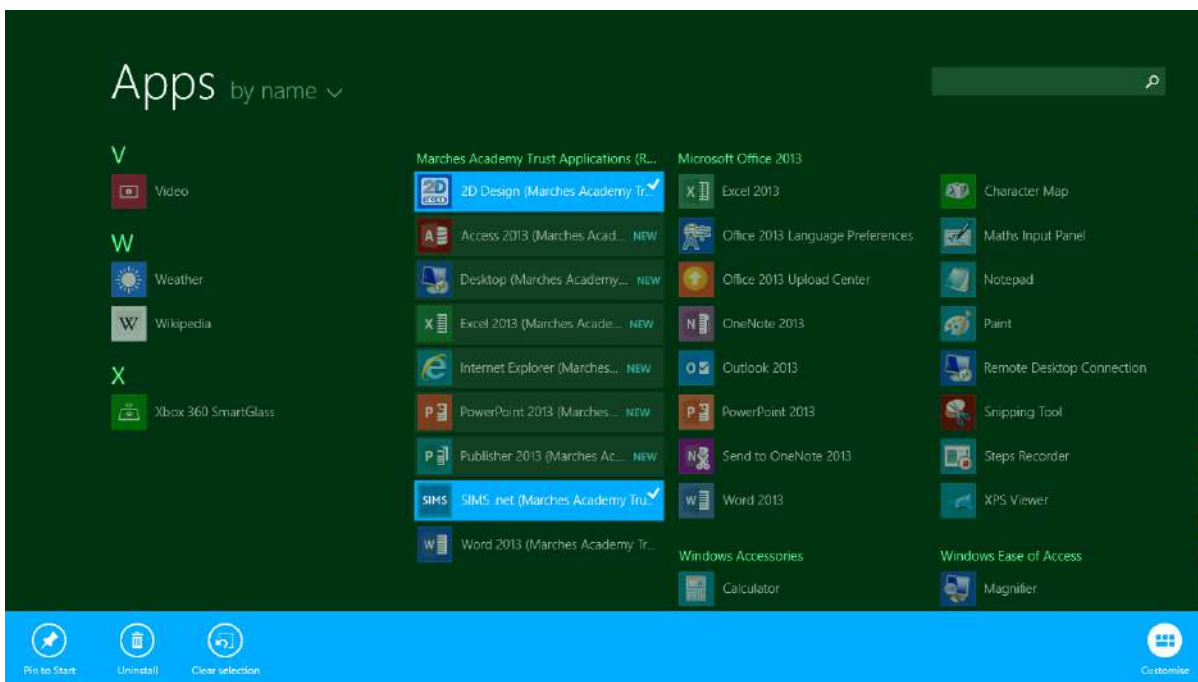
Connect to desktops and programs at your workplace

Marches Academy Trust Applications		Properties
This connection contains:	8 programs and 1 desktops You can access these resources from the Start screen.	<a href="#">View resources</a>
Connection status:	Connected	<a href="#">Disconnect</a>
Most recent updates:	08 December 2014 at 19:31 ✔ Update successful	<a href="#">View details</a>
Date created:	08 December 2014 at 19:31	<a href="#">Remove</a>

You should be shown screen showing the connection and application information. Applications will now be listed the Start Screen All Application list.

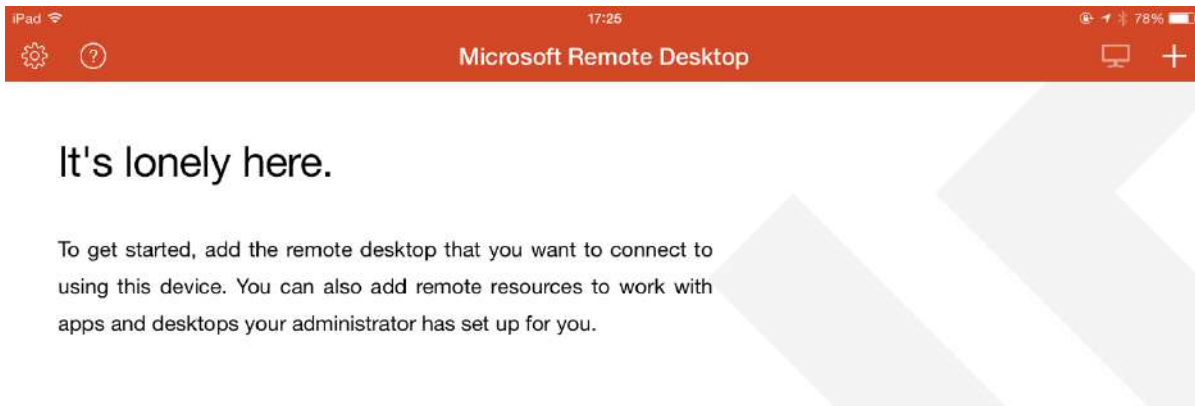


This can be pinned to like local applications.

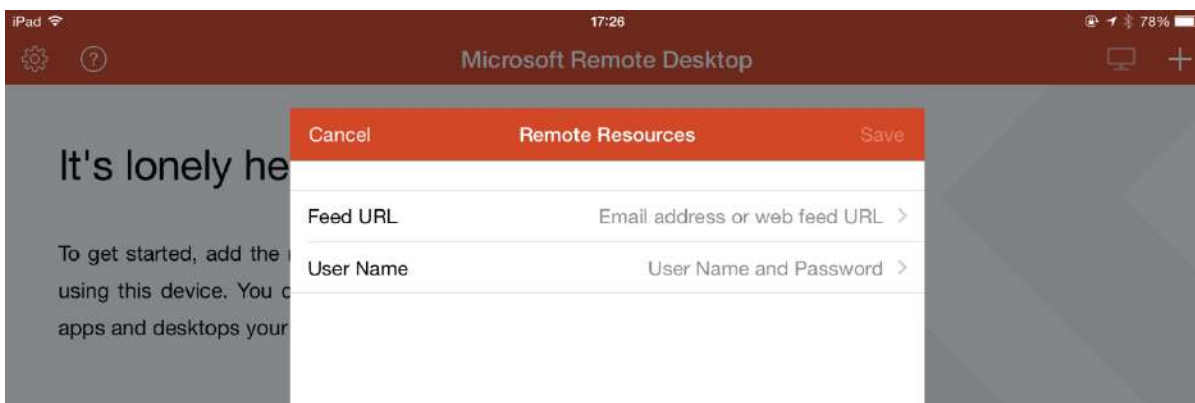
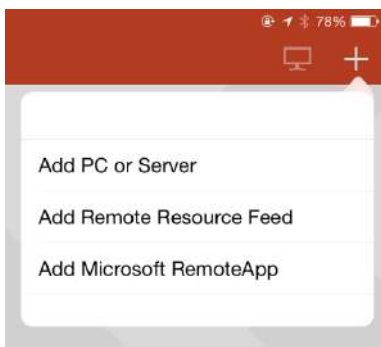


## iOS & Android

These devices require you to download the Microsoft Remote Desktop app (RD Client).

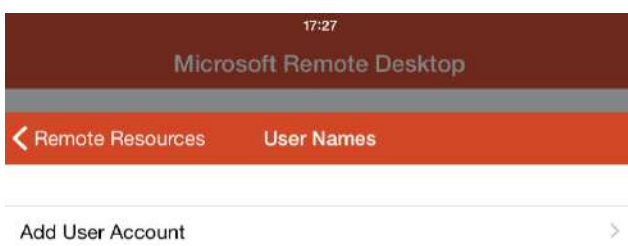


Click the + at the top right and select Add Remote Resource Feed



Select Feed URL and Enter <https://remote.marchesschool.com/rdweb/feed/webfeed.aspx>

Select Username, Add User Account



← User Names      Add User Account      Save

---

User Name      Domain\user or user@domain

---

Password      Required

Enter your credentials (ensure you prefix your username with marchesschool\).

Cancel      Remote Resources      Save

---

Feed URL <https://remote.marchesschool.com/rdweb/feed/we...> >

---

User Name      marchesschool\4437Staff >



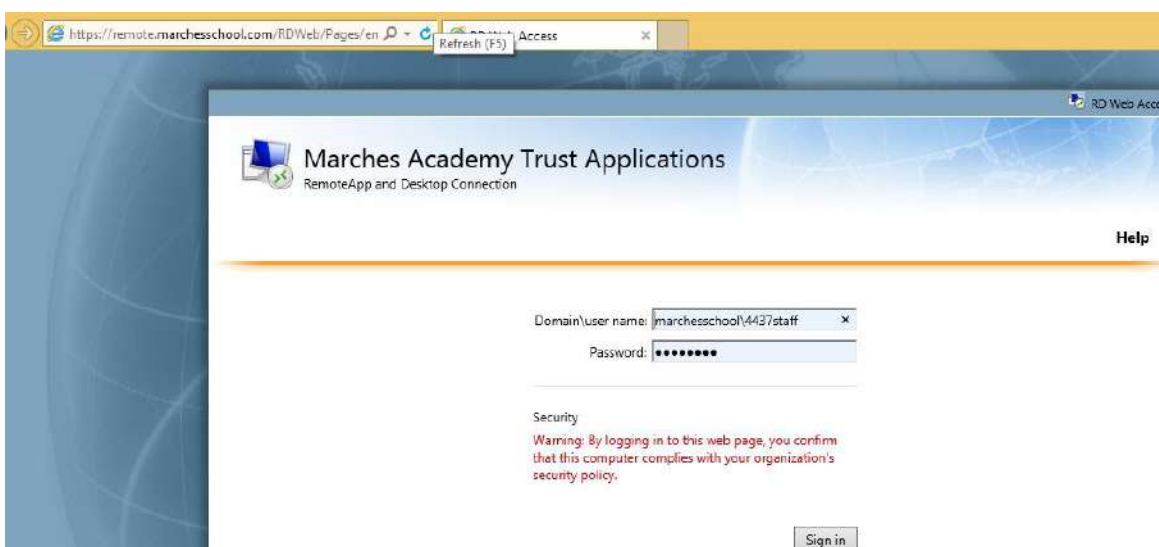
You should be presented with a list of applications.

## Windows 7

Windows 7 uses a standard browser to access remote apps and doesn't require any additional software or setup.

Open Internet Explorer (chrome and Firefox will work but the best experience is with IE) and enter

[HTTPS://remote.marchesschool.com/rdweb](https://remote.marchesschool.com/rdweb) in the URL bar.



Enter your credentials (ensure you prefix your username with marchesschool\) and click Sign in.

This web page wants to run the following add-on: 'Remote Desktop Services ActiveX Client' from 'Microsoft Corporation'. [What's the risk?](#)  x

If you see a ActiveX warning select Allow

The screenshot shows a web-based RemoteApp and Desktop Connection interface. At the top, there is a blue header with the text "Marches Academy Trust Applications" and "RemoteApp and Desktop Connection". Below this, there is a navigation bar with "RemoteApp and Desktops" on the left and "Help" and "Sign out" on the right. The main content area is titled "Current folder: /" and displays a row of application icons: 2D Design, Access 2013, Excel 2013, Internet Explorer, PowerPoint 2013, Publisher 2013, SIMS .net, Word 2013, and Desktop. The Desktop icon is highlighted with a green checkmark.

NOTE: The first application may take a short time to launch.