



# BTEC L2 Tech Award Health & Social Care

The two-year journey starts...

Component 1: Coursework (30%)

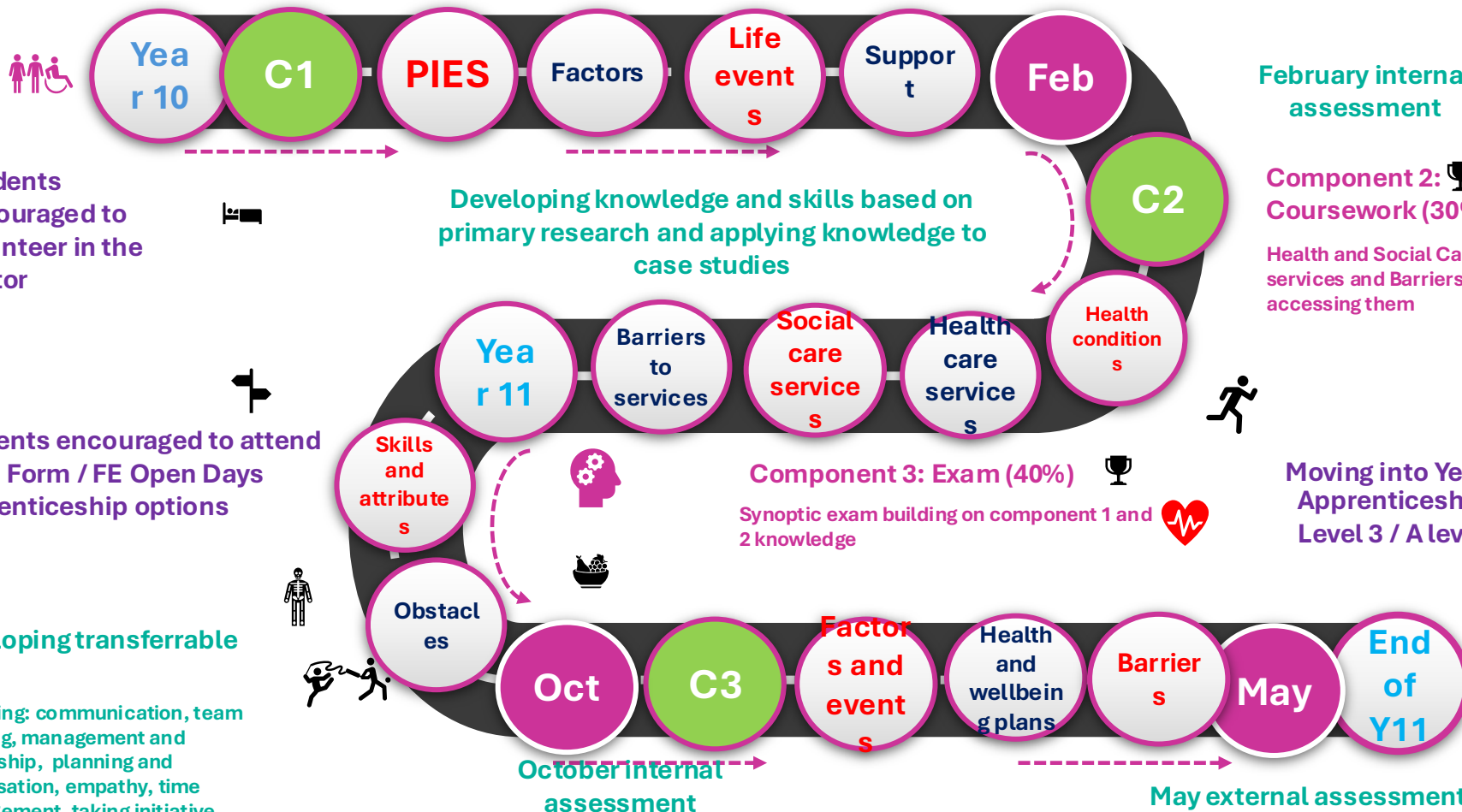


Intervention

Students can use after school intervention for additional 1-1 support throughout their studies

Human Lifespan and Factors affecting growth and development

Life events and supporting individuals



Students encouraged to volunteer in the sector

Students encouraged to attend Sixth Form / FE Open Days  
Apprenticeship options

Developing transferrable skills

Including: communication, team working, management and leadership, planning and organisation, empathy, time management, taking initiative, adaptability and flexibility, problem solving, research

February internal assessment

Component 2: Coursework (30%)

Health and Social Care services and Barriers accessing them

Moving into Year 12...  
Apprenticeship  
Level 3 / A levels

