

Progress Page: Year 9 Summer 2: Representations

Working Towards		Expected Standard			Reaching Greater Depth	
Topic	To achieve 'Expected Standard' you will be able to....	WT	ES	Sparx code		
Probability	Single event probability			M941		
	Relative frequency, including convergence			M206		
	Expected outcomes			U166		
	Independent events			M299		
	Use diagrams to work out probabilities			M299		
Algebraic Representations	Investigate graphs of simultaneous equations			U875		
	Represent inequalities			M384, U337		
To achieve 'Greater Depth' you will be able to...		GD				
Probability	Use tree diagrams			M299		
	Use tree diagrams to solve problems without replacement			M290		
Algebraic Representations	Draw and interpret quadratic graphs			U178		
	Interpret graphs, including reciprocal and piece-wise			M771, M843, M596, U980, U593		



Y9 Summer 2: Representations



In this topic, you will be introduced to different representations of probability events and of graphs.

Independent Events

The outcome of one event does not affect the outcome of the other.

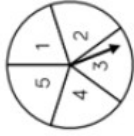
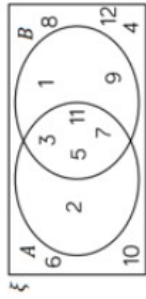
Dependent Events

The outcome of one event affects the outcome of the other.

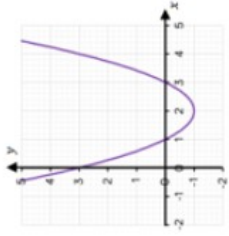
Calculate the probabilities of independent events

Calculating relative frequency

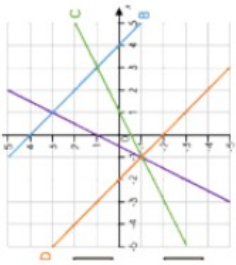
Using diagrams to calculate probabilities



Draw and interpret quadratic graphs



Graphs of simultaneous equations (H)



Assessment point: Algebraic Representation

Time for Revision ready for Y10!

Representations

Calculate the probability of a single event

What is the probability of the arrow landing on a 3?



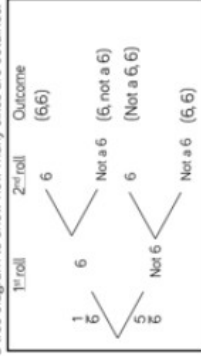
$$\frac{2}{6} = \frac{1}{3}$$

Expected Outcomes

Calculating probabilities using probability trees (H)

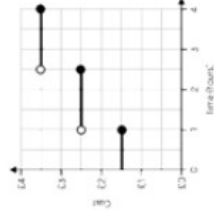
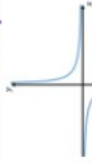
A fair die is rolled twice.

Here is a tree diagram to show how many sixes are obtained.

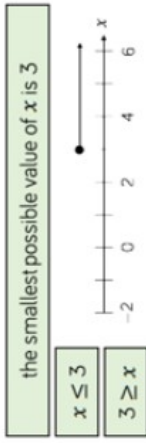


Assessment point: Probability

Interpret different graphs (including piece-wise and reciprocal)



Representing inequalities



the smallest possible value of x is 3

